

Projects in Planning, Design & Construction



Office of Planning, Architectural and Engineering Services

September 9, 2015

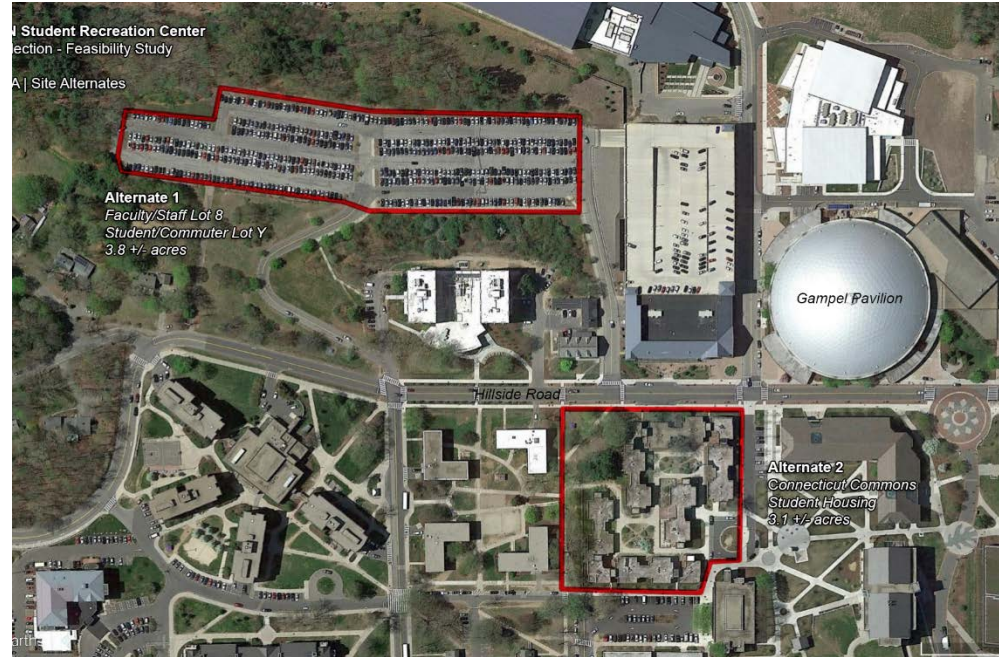
in Planning

Project Updates: **\$375M+** currently in Planning

- Student Recreation Center Site Analysis
- Science Facilities Space Planning
- Science 1 Building – Architect interviews in early Spring 2016
- Infrastructure projects – Framework Engineer on-boarding
- On-going Planning Activities

Student Recreation Center Site Analysis

- Scope: Site inventory, analysis & concepts on 2 sites for locating a new Student Recreation Center
 - 200,000 GSF building program
- Budget: \$75,000, Planning phase
 - Project Programming
 - Conceptual Design
- Schedule: Completion Sept 2015
 - Basis for A/E design
- Key Issues: Schedule; enabling projects



2 Sites analyzed: Y Lot above McMahon, and CT Commons on Hillside

Science Facilities Space Planning

Current Status:

- **Evaluation of Current Space Needs** – This phase is complete
- **Formulation of Gant Renovation Strategy** – This phase is complete
- **Forecast of Future Space Requirements** – This phase will be complete in Sept
- **Development of an Implementation Strategy that Includes Both Renovation and New Construction** - Materials are being prepared for discussion with the campus Leadership on October 1 to address capital project plans (schedules and cost estimates)

The Science Space Planning is on schedule to be complete by January 2016 to start the design process for the Science 1 Building in the NW Quad

On-Going Planning

- Capital Projects Planning Support
- Library Facilities Master Plan
- Demonstration Classroom Planning
- Depot Campus Redevelopment Planning
- Gateway and Wayfinding Planning
- Space Inventory Data Collection and Updates

in Design

Project Updates: **\$325M+** currently in Design

- Fine Arts Production Addition
- Gant Building Renovation - STEM
- Student Recreation Center- Architect selection in process
- Soccer, Baseball & Softball Stadia Conceptual Design
- Gampel Pavilion Renovation
- Main Water Line Replacement, Phase II
- North Eagleville Road Infrastructure, Phase III
- Other Infrastructure Projects

Fine Arts Production Addition

- Scope: 30,000 GSF Addition
 - Production facility, including paint, scenery, and welding shops
 - New entry and connectivity
- Budget: \$21.6M Design Development phase
- Schedule:
 - Bidding in Fall/Winter 2015
 - Start construction Spring 2016
 - Complete construction Winter 2017
- Key Issues: Timing of EIE Approvals, timing of funding approval



Site Plan, Bolton Rd to bottom & 195 to right 7

Gant Building Renovation - STEM

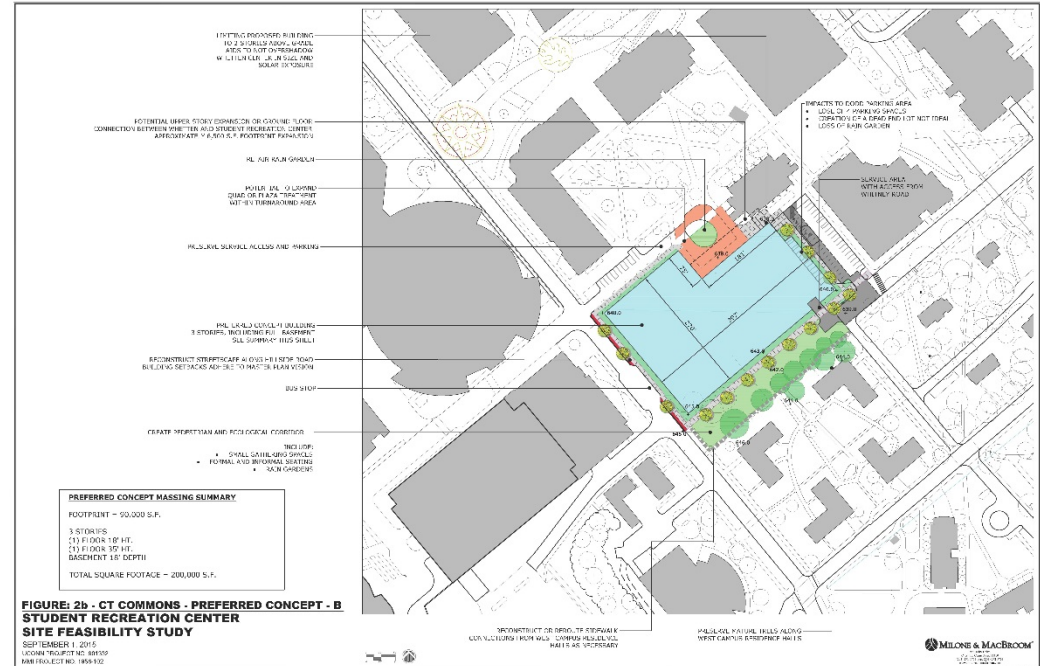
- Scope: 285,000 GSF Renovation
 - Teaching labs, faculty offices and support space upgrades
 - Infrastructure and Envelope Upgrades
 - Targeting LEED Gold
- Budget: \$ 140M – 170M Revised Planning
- Schedule:
 - Pre-Design in Process
 - Start construction Spring 2017
 - Complete construction Summer 2021
- Key Issues: Data center operation during construction



Gant Building, looking East

Student Recreation Center

- Scope: new Student Recreation Center
 - 200,000 GSF building program
- Budget: \$100M, Planning phase
 - Architect Interviews – Sept 24
- Schedule:
 - Design Fall 2017
 - Bidding Winter 2017
 - Complete construction Summer 2019
- Key Issues: timing of enabling utility projects and EIE



Student Recreation Center location on Hillside, near Gampel

Stadia Conceptual Design

- Scope: Site analyses & conceptual designs for new soccer, baseball & softball stadia, in existing locations
 - Tools for additional fundraising
- Budget: \$100,000
 - Site & Stadia Programming
 - Conceptual Design, with options
- Schedule: Completed August 2015
 - Basis for full design services
- Key Issues: Fundraising; unfunded options; infrastructure planning & design; ice hockey location



Site Plan, Soccer to right, Baseball & Softball to left

Stadia Conceptual Design



*Concept for Soccer
Stadium*

Stadia Conceptual Design



*Concept for Baseball
Stadium*

Stadia Conceptual Design



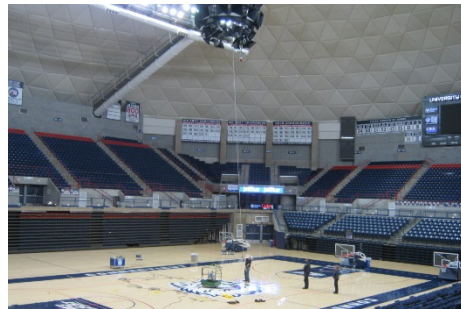
*Concept for Softball
Stadium*

Gampel Pavilion Dome & Roof Repair

Gampel Pavilion Dome & Roof Repair

- Scope:
 - Repair the interior and exterior dome roof
 - Address code issues
 - Upgrade Infrastructure for network broadcast cabling
- Budget: \$10M Design phase
- Schedule:
 - Design in process
 - Start Construction Spring 2016
 - Complete Construction Fall 2016

Interior



Exterior

Main Water Line, Phase II

Main Water Line Phase II

- Scope:
 - Final phase replacement of Main Water line from Willimantic Well Field
 - Connection to future CT Water supply from Tolland
- Budget: \$6M Design phase
- Schedule:
 - Design in process
 - Start Construction Fall 2015
 - Complete Construction Fall 2016



North Campus Site Plan

Completed / in Construction

Project Updates: **\$550M+** currently in Construction

- Young Building Renovation/Addition Envelope Repairs
- North Eagleville Road Infrastructure, Phase II
- Gurleyville Road Pump Station & Sewer Replacement
- North Hillside Road
- STEM Residence Hall
- Putnam Refectory Renovation
- Hartford Campus Relocation
- Innovation Partnership Building
- Engineering and Science Building
- Monteith Renovation
- Main Accumulation Area (chemical waste transfer facility)
- Gampel Cooling Towers

Young Building Renovation / Addition - Envelope Repairs

- Scope: Exterior masonry restoration –
 - Site work improvements, new granite stairs, and landscaping
 - Membrane roof replacement and selective slate roof replacement
- Budget: on budget \$5M
 - CM GMP project delivery
- Schedule:
 - Construction Started April 2015
 - Complete construction December 2015

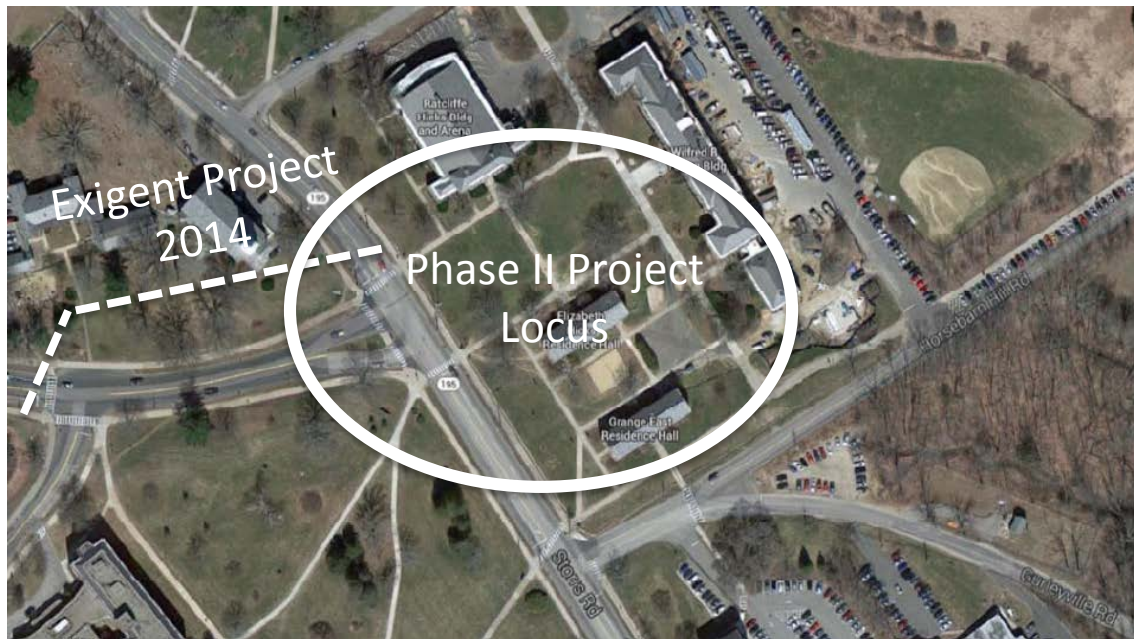
West façade of Young Building, top
East façade of Young Building, bottom



North Eagleville Road (NER), Phase II

North Eagleville Rd Infrastructure Upgrades Phase II

- Scope:
 - Young Quadrangle Utility Replacement
- Budget: on budget \$5.25M
Final phase
- Schedule:
 - Start Construction June 2015
 - Complete Construction December 2015



Young Building Quad

North Eagleville Road (NER), Phase II



Construction – NER Phase II, Area 1



Construction Completion – NER Phase II, Area 1

North Eagleville Road (NER), Phase II



Construction – NER Phase II Area 3, Young Quad



*Construction – NER Phase II Area 3, Young Quad
(Ratcliffe Hicks Arena on right of photo)*

Gurleyville Road Pump Station

Gurleyville Rd Pump Station & Sewer Replacement

- Scope:
 - Upgrade sewer on Rte. 195 from Mansfield Rd to Pump Station
 - Renovate pump station
 - Upgrade to accept additional flow from Res Hall and D'town Storrs
- Budget: \$5M Final phase
- Schedule:
 - In Construction
 - Complete Construction July 2016



Sewer pipe location along 195 and behind residence halls

Gurleyville Road Pump Station



Sewer By-Pass Piping and Pumps – Storrs Road – to allow for sewer replacement



Sewer replacement – Storrs Road in front of Blake House

Gurleyville Road Pump Station



Sewer replacement – Storrs Road in front of Blake House Trenching and Rock Removal

STEM Residence Hall

- Scope: 212,000 GSF, 8 stories above grade
 - 725 beds + staff and director apartments
 - Includes 22,000 GSF Learning & Innovation Center
 - HPBC, anticipate LEED Silver
- Budget: On budget at \$105M
 - Design Build project delivery
- Schedule: On expedited schedule
 - Started construction Nov 2014
 - Complete construction July 2016
- Key Issues: Project back on schedule, topping out mid-Sept, enclose by next Winter



Views looking West 24

STEM Residence Hall



View looking East



View looking North

Putnam Refectory Renovation

- Scope: 42,000 GSF renovation, 2 floors
 - Provide additional 330 seats, improve and add servery
 - Anticipate LEED Silver
- Budget: \$23M Design Development phase
 - Revised bids on Budget
- Schedule: Schedule was restructured
 - Lower level renovation to Spring 2016
 - Dining Hall closes March 11, 2016
 - Completion in August 2016
- Key Issues: Completing sitework prior to the Winter, early closing of dining hall



UConn Hartford

- Scope: 180,000 GSF, 5 floors
- Budget: Preliminary Bids on the project are trending over budget and are under review
- Schedule: On schedule
 - Demolition started this Summer
 - Site Prep work starting
 - GMP due late September 2015
 - Complete construction July 2017
- Key Issues: Budget concerns based on preliminary bids



Construction on the Hartford Times Building

UConn Hartford

- 38 Prospect Street:
 - Four-story, 34,000 SF Building
 - Purchase completed June 2, 2015
 - Renovation expected to commence Summer 2016
- Hartford Public Library:
 - Space Use and Construction agreement for 18,000 SF being prepared
 - November 2015 document execution
- Wadsworth Athenaeum:
 - Space Use agreement for 1,800 SF discussions pending new director



38 Prospect Street

Innovation Partnership Building

- Scope: 114,000 GSF, 3 floors + Penthouse
 - Includes 25,000 SF shelled tenant lab space
 - Core Additive Manufacturing and Advanced Characterization (Imaging)
 - HPBC, anticipate LEED Silver
- Budget: on budget \$162.3M
 - CM GMP project delivery
- Schedule:
 - Started construction June 2015
 - Complete construction June 2017



Innovation Partnership Building



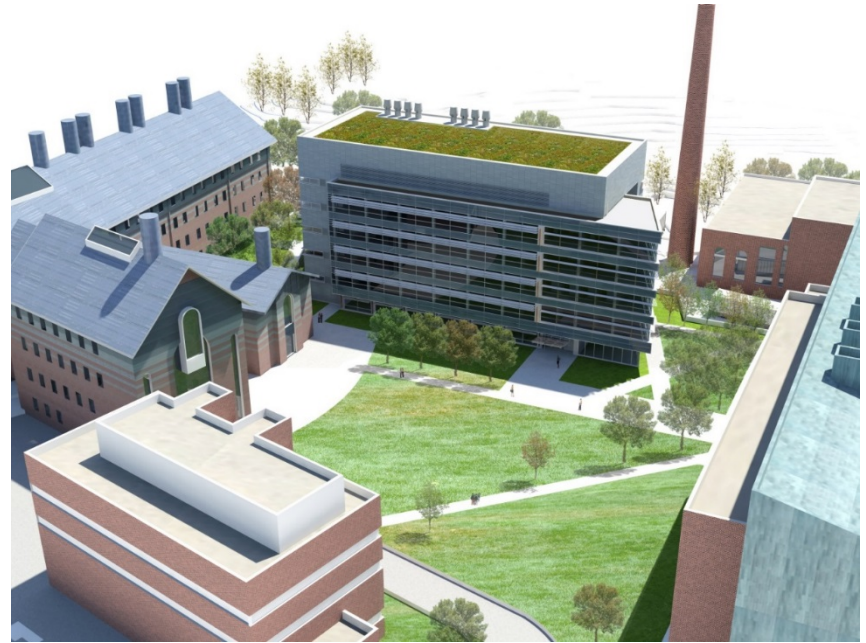
*North Lab Bar Support Tower Foundation
Reinforcement*



Site Clearing

Engineering and Science

- Scope: 115,000 GSF, 5 floors + penthouse
 - HPBC, anticipate LEED Silver
- Budget: Budget: \$95M
 - CM GMP project delivery
- Schedule: On schedule
 - In Construction
 - Complete construction Spring 2017
- Key Issues: None at this time



Engineering and Science



Enabling Work – Access Road and Retaining Wall



Enabling Work – Site Clearing and Utility Relocations

North Hillside Road Extension

- Scope: Extension of North Hillside Rd from Charter Oak Complex entrance to Route 44
- Budget: Budget: \$20.365M
 - GC Unit Price project delivery
- Schedule: On schedule
 - In Construction – 60% complete
 - Projected open to traffic Dec 2015
- Key Issues: Coordination of work in Route 44 with Connecticut Water Project. Potential for winter temperatures during final paving could impact asphalt plant production



Base Course Paving in Progress

North Hillside Road Extension



Bridge Construction at Wetlands Crossing C



Box Culvert Construction at Wetlands Crossing A

Monteith Renovation

- Scope: 73,000 GSF renovation, 4 floors
 - New home for Department of Math, starts to vacate Gant
 - Targeting LEED Silver
- Budget: \$25M Construction Document phase
 - GC Lump Sum project delivery
- Schedule: On schedule
 - In construction
 - Complete construction July 2016
- Key Issues: aggressive schedule



QUESTIONS/COMMENTS?

Laura Cruickshank, FAIA

University Master Planner & Chief Architect

(860) 486-1656 laura.cruickshank@uconn.edu

Sean Vasington PLA, ASLA

Associate Director & University Landscape Architect

(860) 486-5865 sean.vasington@uconn.edu