



Town Hall Forum Project Updates

March 10, 2014

Master Plan 2014

Next Generation Connecticut

- Storrs
 - Monteith
 - STEM Science Building 1
 - Fine Arts Production Facility
 - STEM Residence Hall
- Stamford
- Waterbury
- Avery Point
- Hartford

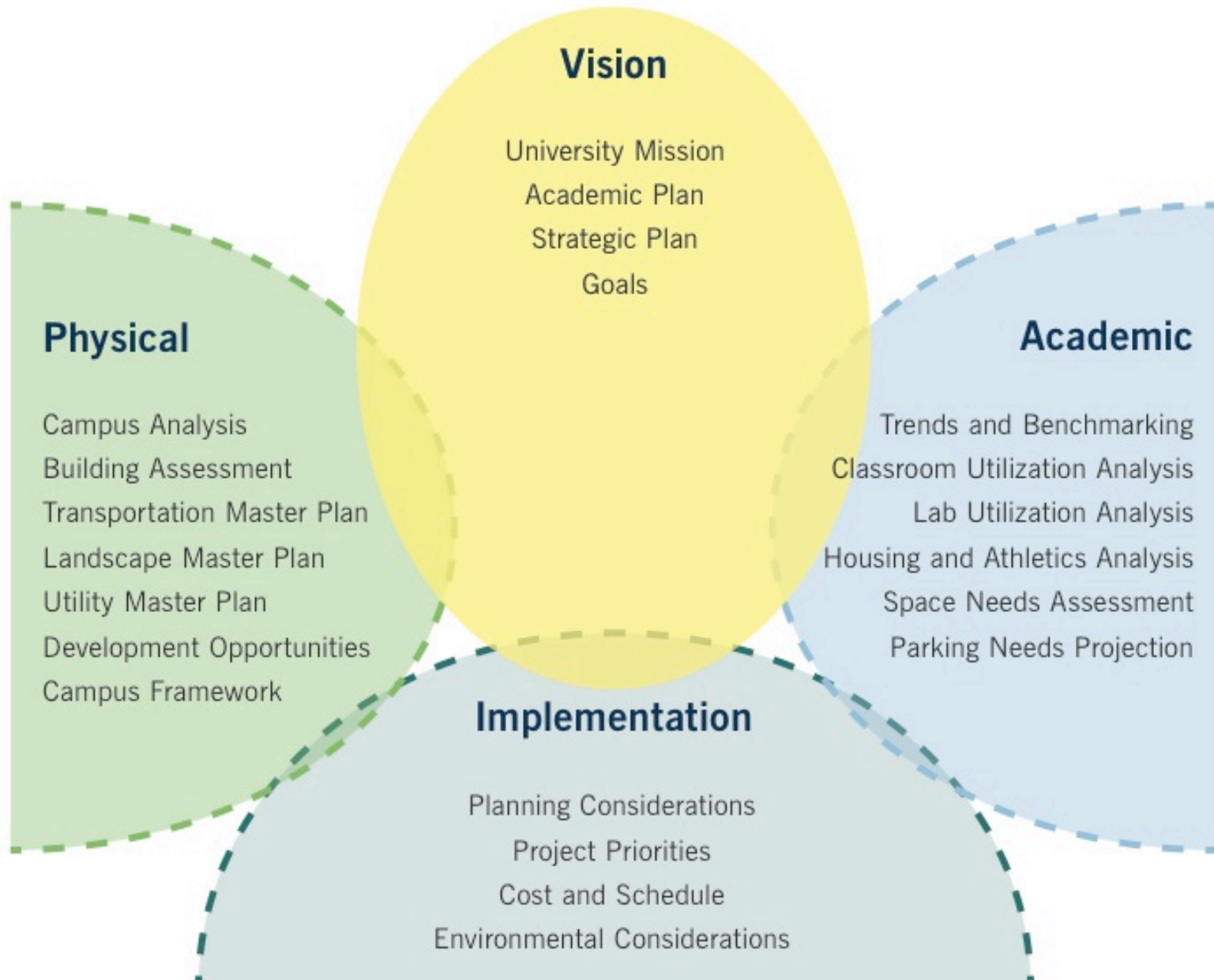
in Planning

A Comprehensive Master Plan

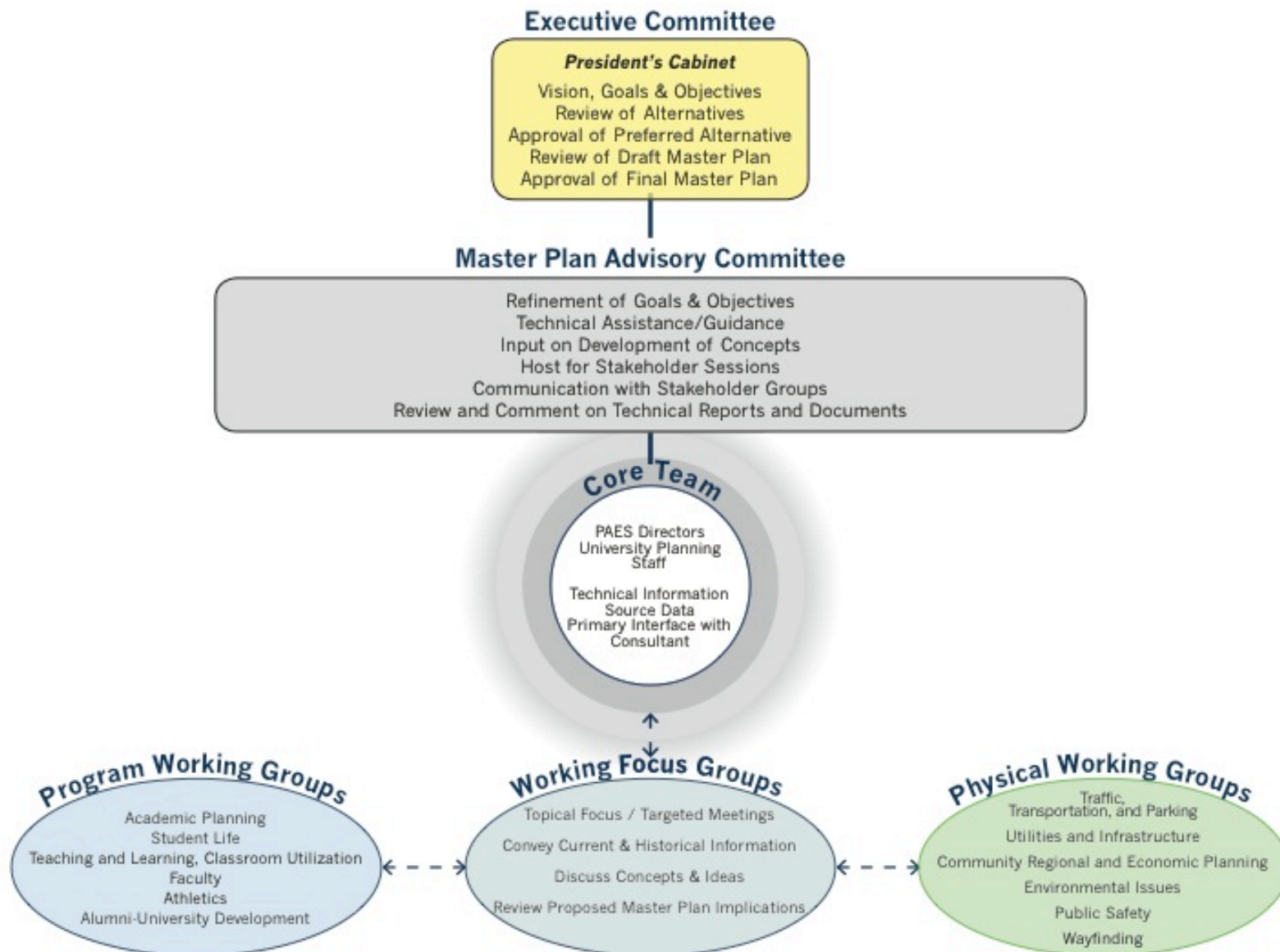
- Long Term Vision
- Physical Plan in Support of Academic Plan
- Flexible Framework for the Future
- Specific Project Implementation



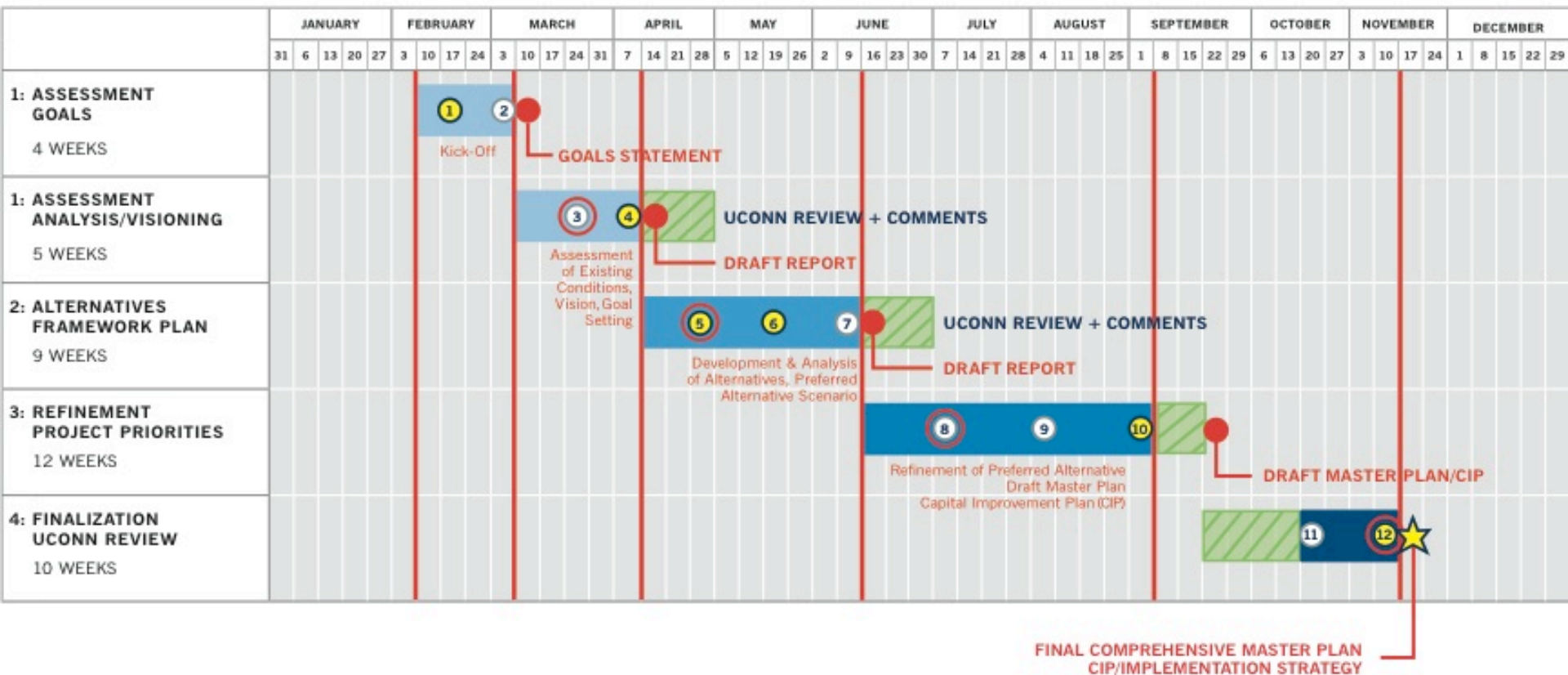
Scope of Work



Master Plan Committee Structure



Process



- EXECUTIVE COMMITTEE MEETINGS
- COMMITTEE MEETINGS
- STAKEHOLDER FORUM/WORKSHOP
- FINAL DELIVERABLE

Master Plan 2014

Next Generation Connecticut

- Storrs
 - Monteith
 - STEM Science Building 1
 - Fine Arts Production Facility
 - STEM Residence Hall
- Stamford
- Waterbury
- Avery Point
- Hartford

in Planning



Existing Conditions: Putnam Refectory, Hale & Ellsworth, Garrigus Suites



Aerial View

DRAFT



Aerial View

DRAFT

Master Plan 2014

Next Generation Connecticut

- Storrs
 - Monteith
 - STEM Science Building 1
 - Fine Arts Production Facility
 - STEM Residence Hall
- Stamford
- Waterbury
- Avery Point
- Hartford

in Planning

PROJECT STATUS

- **Program Verification**: Academic program verified
- **Conceptual Design**: in process for the Hartford Times site
- **Neighborhood Campus Concept**: Integrate complementary academic uses with neighboring institutions and encourage foot traffic and interaction within the community

PROGRAM: HARTFORD CAMPUS

- School of Social Work
- Department of Public Policy
- CLAS undergraduate Programs
- Master of Engineering
- School of Education
- School of Business
- Graduate Business Learning Center
- NSOE w/ Clusters in Achievement Gap & Evaluation, Policy & Assessment
- Urban & Community Studies
- Jumpstart

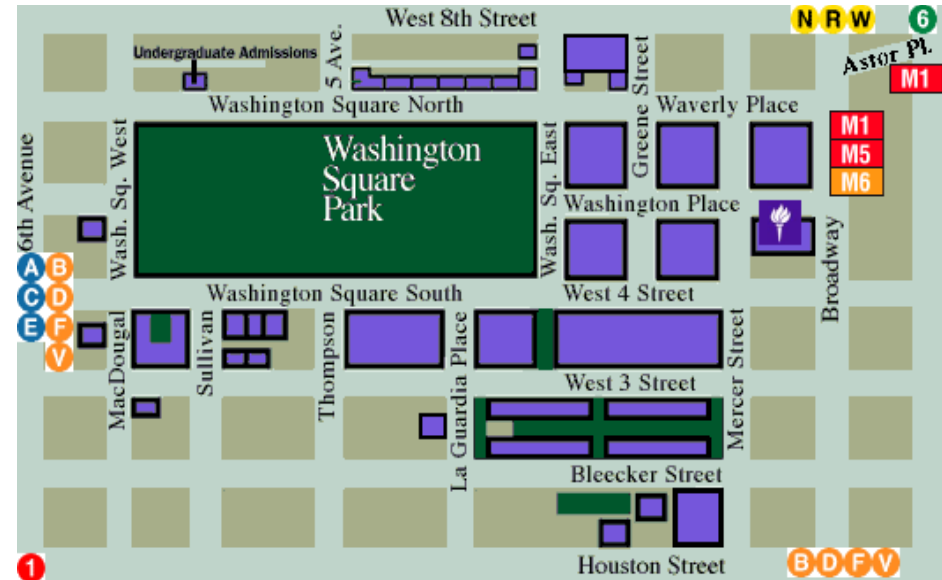
Teaching/Instructional Spaces

Meeting Spaces

Student Resource Spaces

Dedicated Faculty Office Spaces

EXAMPLE OF NEIGHBORHOOD CAMPUS: NEW YORK UNIVERSITY



NYU Campus – Compact identifiable core (around Washington Square), but expansive over many blocks in the City

EXAMPLE OF NEIGHBORHOOD CAMPUS: NEW YORK UNIVERSITY



The neighborhood around Washington Square has become synonymous with New York University

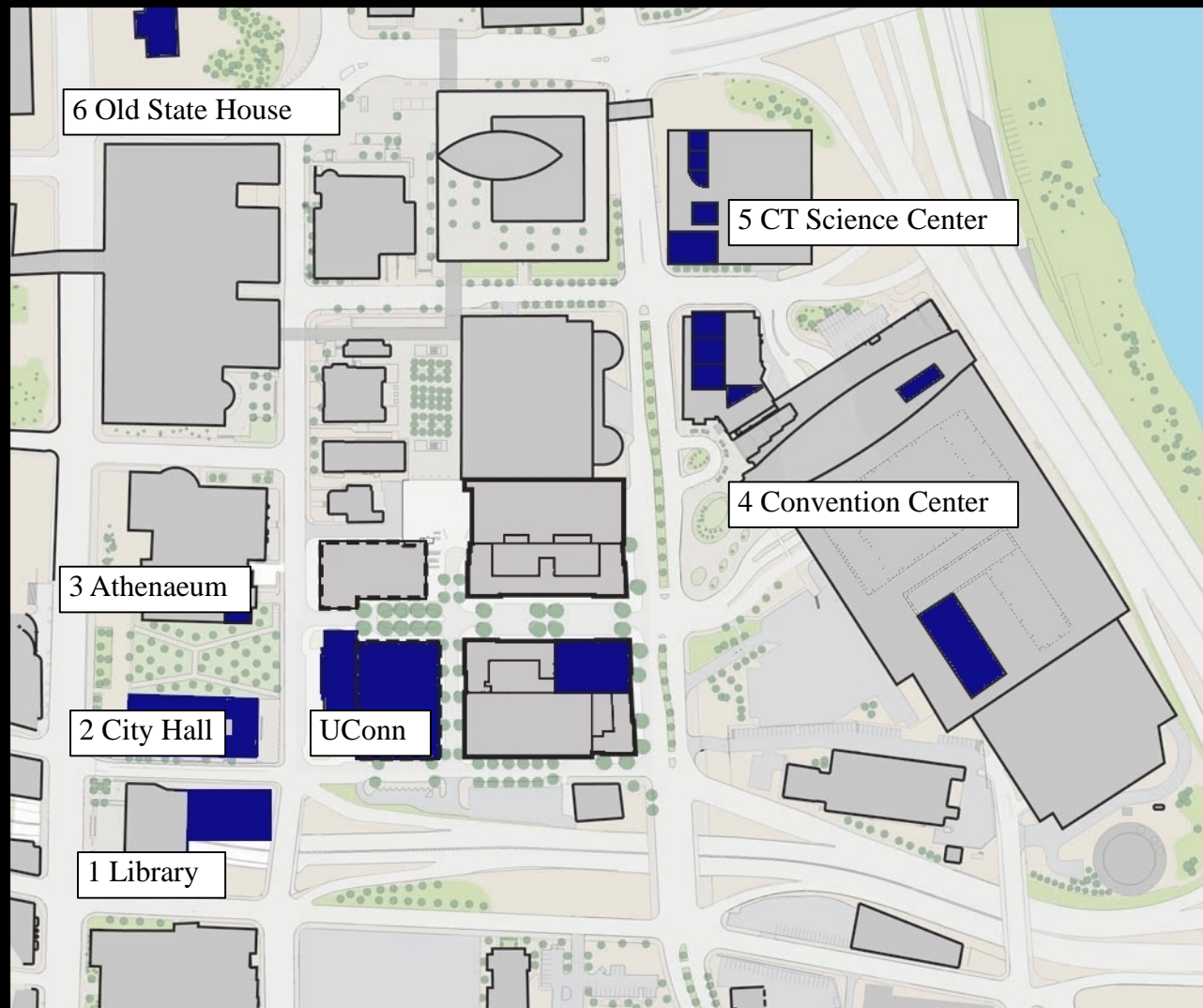
UConn Site



 **UConn**
Proposed Hartford
Campus

FrontStreet DISTRICT

PUBLIC INSTITUTIONS IN THE NEIGHBORHOOD



**Neighborhood institutions
interested in partnering w/
UConn:**

1. Hartford Public Library
2. Hartford City Hall
3. Wadsworth Athenaeum
4. CT Convention Center
5. CT Science Center
6. CT Old State House

INSTITUTIONS



Hartford Public Library



Hartford City Hall



Wadsworth Atheneum



CT Convention Center

Neighborhood Resources and Use

Ceremonial Use

**Special occasions
Furthest proximity**

Laboratories

Occasional
Meeting/Lecture

Classroom

Faculty Space

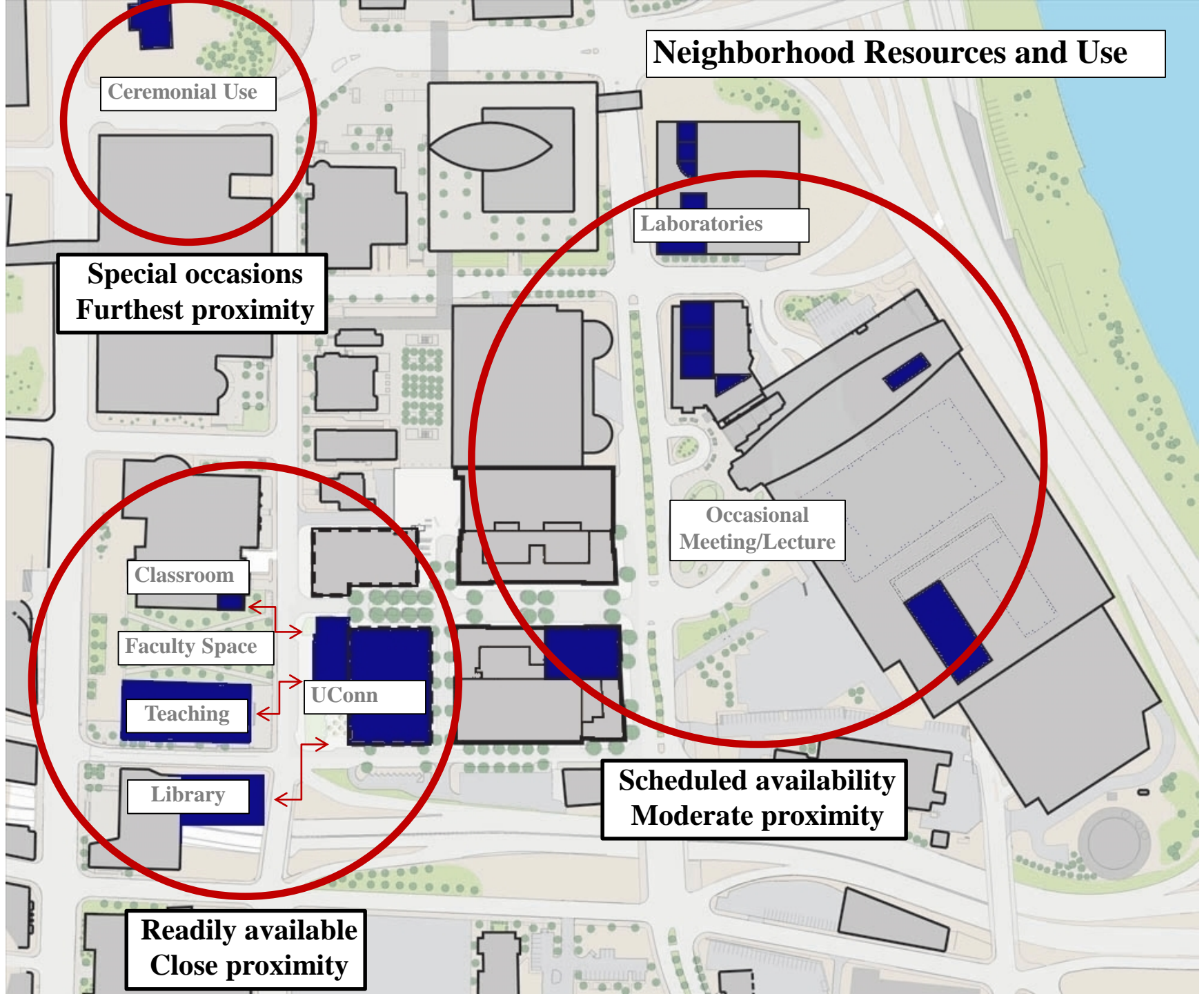
Teaching

Library

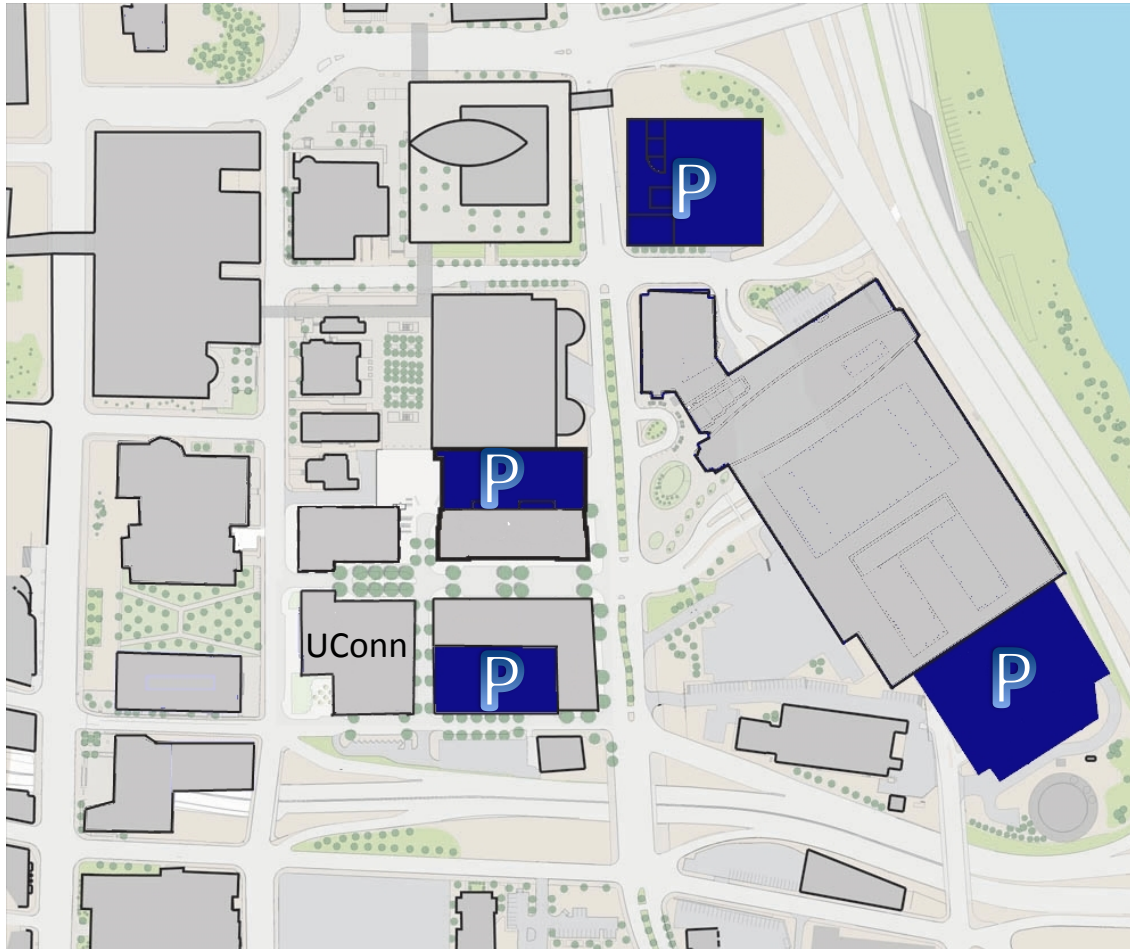
UConn

**Scheduled availability
Moderate proximity**

**Readily available
Close proximity**



OTHER CONSIDERATIONS: PARKING IN THE AREA



PARKING GARAGE
STRUCTURES

NOTE: SOME
LIMITED ON-GRADE
PARKING AVAILABLE
IN AREA

Project Updates

- Storrs
 - Engineering & Science
 - Innovation Partnership Building
 - Basketball Development Center
 - Whetten Quad
 - Gant Building Repairs

**in Design
in Construction
and Completed**

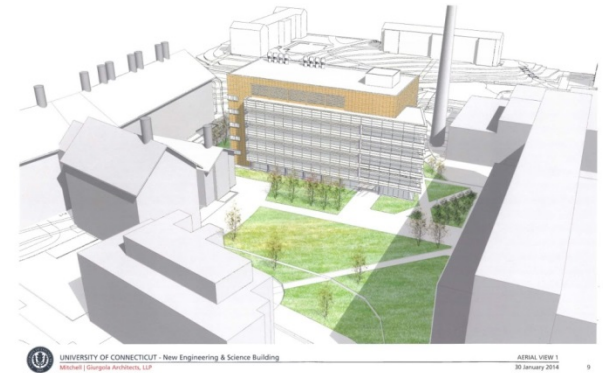
Engineering & Science Building

New Construction: 116,000 GSF
Project Budget: \$92,500,000

Construction Start: Jan 2015
Estimated Finish: Nov 2016

The new Engineering & Sciences Building is a 5 story research lab building with Engineering occupying 3 floors and Sciences occupying 2 floors. The project includes demolition of the Old Central Warehouse and the relocation of utilities in the area. The building has an open floor plan for maximum flexibility in the lab areas.

Design documents are scheduled to be issued in Oct, 2014 and the project will be bid in Nov / Dec. Demo of the warehouse will be completed this summer and the major project construction will commence in Jan, 2015. Completion is scheduled for end of 2016 with set-up / move-in complete by early Jan, 2017.



in Design

Innovation Partnership Building

New Construction: 113,000 GSF
Project Budget: \$172,500,000*

Construction Start: Dec 2014
Estimated Finish: Dec 2016

The Innovation Partnership Building is the first anchor building in the new Technology Park. It contains 2 Specialty Labs (High Bay Additive Manufacturing Lab and Advanced Characterization Lab) and provides approximately 35,000 SF of shell space for future tenant use.

Full construction documents are scheduled for issue in late July 2014.

* Tech Park bond funding includes the building and partial funding for the road and water line.



in Design

Basketball Development Center

New Construction: 76,000 GSF
Project Budget: \$33,538,300

Construction Start: Dec 2012
Estimated Finish: May 2014

The two-story Basketball Development Facility is under construction on the site of the former Memorial Stadium behind Gampel Pavilion.

The building envelope is complete except for a small area of brick façade. Concrete floors, fireproofing, air vapor barrier, interior concrete back up walls are all complete. HVAC, Electrical, sprinkler, plumbing rough in is 85% complete. Installation of the wood court Floor will start in March.

The building will accommodate the Men's and Women's Basketball programs with space for courts, strength and training, video, academic study, locker rooms, equipment, laundry and office areas.



in Construction

Whetten Quad

Construction Start: May 2013

Construction Finish: Jan 2014

Project Budget: \$4,000,000

The project included installation of pedestrian walkways, plaza spaces, lawn areas, efficient service vehicle access and accessible parking and reconstruction and reconfiguration of the of the Dodd Center parking lot.

Rain Garden plant materials will be planted in the Spring.

Gant Building Repairs

Construction Start: Dec 2012

Construction Finish: Jan 2014

Project Budget: \$8,570,000

Renovation: 238,000 GSF

The project included removal and replacement of the brick masonry façade and curtain wall at the North and South Stair towers and the replacement of the roof membrane in the Physics wing.

Completed Projects